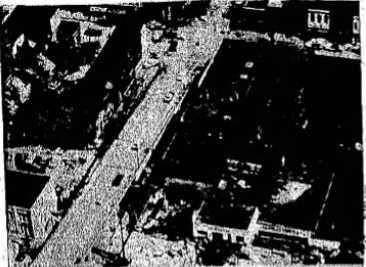


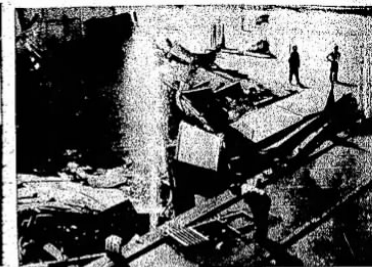
Views Of The Aftermath In Atchison's Disastrous Storm—



AERIAL VIEW shows street's damage. Globe building is at lower left. The Simpson-Tanning Co. building is at upper left. Note the water's mark through buildings on Main, Fifth and Chicago streets. In background are the law building, which is in ruins.



BOUSHEFF, SHIRTLESS, MEETS flood waters in front of residence 200 South Fifth. In background are tilted pumps of the water station.



30-FOOT CEILING floods into the air from approximately where the Shawcross cafe was located at 200 South Fifth. In background are tilted pumps of the water station.

ATCHISON SUNDAY GLOBE

Dear World: We've Been Shook Up Some By The Elements—But Not Licked By A Long Shot

Wade Into Mammoth Cleanup Chore

City Battles Back After Wind, Hail And Flood—Declared Disaster Area

LFM Rolls Up Its Sleeves—

Let's Be Sure It Won't Ever Happen Again!

Miracle Of Orderliness

Atchison people are so commended. Despite sudden violence of the disaster which struck in the early hours of Friday, there was no confusion, no hysteria, no thoughtlessness.

Storm Damage Rundown—

Store's hardware business with high value in the basement... Police Chief... Damage Rundown... The Byers... Commercial... Gas To Be Shut Off...

BULLETIN The Atchison City Waterworks succeeded in starting Hoffman pump at its pumping station on the bank of the Missouri river at 4:30 p.m. Saturday.

Atchison's merchants, business people and home owners who were victims of this city's history-making storm early Friday have commenced the gigantic clean-up job.

After walking through the downtown district on a personal inspection tour Saturday the mayor commended: "The spirit of the merchants is wonderful. They are in a frame of mind that something less happened and they are going to make the best of it."

Col. H. R. Flawater, director of Civil Defense in Atchison, also visited the scene of Atchison's calamity. The city took terrific punishment not only from the flood, Flawater noted, but also from wind and hail.

L. E. Weatherford, superintendent of the Atchison City Waterworks, reported that it was hoped to have its pumping plant back in operation by 4 p.m. Saturday.

"We are concentrating our efforts on a pump with a capacity of pumping 300 million gallons of water from the Missouri river in the Missouri plain and reservoir every 24 hours," Weatherford declared.

Atchison has been declared a disaster area by the Federal Emergency Administration in Washington, D.C.

Atchison can't do much to protect itself against lightning, but it can do much to protect itself against wind storms. Much of Friday morning's destruction was due to these elements.

Let's be sure it won't ever happen again! Let's be sure it won't ever happen again! Let's be sure it won't ever happen again!

Let's be sure it won't ever happen again! Let's be sure it won't ever happen again! Let's be sure it won't ever happen again!

Let's be sure it won't ever happen again! Let's be sure it won't ever happen again! Let's be sure it won't ever happen again!

Let's be sure it won't ever happen again! Let's be sure it won't ever happen again! Let's be sure it won't ever happen again!

Let's be sure it won't ever happen again! Let's be sure it won't ever happen again! Let's be sure it won't ever happen again!

Let's be sure it won't ever happen again! Let's be sure it won't ever happen again! Let's be sure it won't ever happen again!

Will Discuss Federal Aid

Atchison has been declared a disaster area by the Federal Emergency Administration in Washington, D.C.

Gas To Be Shut Off

The Atchison Electric and Light Co. Saturday said that gas service within the area between Third and Sixth, and between Kansas and Main streets, will be shut off.

Heavy Trains Were Chained, But Cars Held Their

Heavy trains were chained, but cars held their. Heavy trains were chained, but cars held their.

Damage Rundown

Damage Rundown. Damage Rundown. Damage Rundown.

Atchison Has Been Declared Disaster Area

Atchison has been declared a disaster area by the Federal Emergency Administration in Washington, D.C.

Gas To Be Shut Off

The Atchison Electric and Light Co. Saturday said that gas service within the area between Third and Sixth, and between Kansas and Main streets, will be shut off.

Heavy Trains Were Chained, But Cars Held Their

Heavy trains were chained, but cars held their. Heavy trains were chained, but cars held their.

Damage Rundown

Damage Rundown. Damage Rundown. Damage Rundown.

ATCHISON DAILY GLOBE

For The Neatest Trick Of The Week: Trying To Dry Off Inside All The While It Continues To Pour Rain Outside

Area Weather

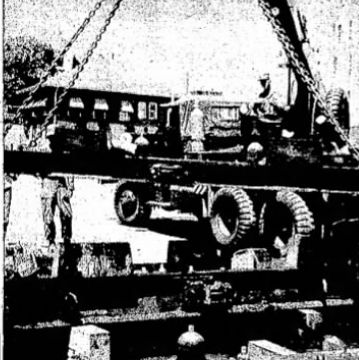
Area weather forecast for Wednesday, July 16, 1958. Clear with showers through tomorrow.

LONG RANGE FORECAST: Kansas temperature will average 4 to 8 degrees below normal through Thursday and Friday.

Fort Scott Hit By Downpour

Fort Scott, Mo. in heavy rains last night. Heavy rains last night water flowing through low lying areas and residential areas of Fort Scott.

The Harrison River, fed by an unusual quantity of rain, is about 100 feet above normal at Atchison.



Viaduct And Bridge Checks Under Way

State officials have been checking the viaduct and bridge under way. The Harrison River, fed by an unusual quantity of rain, is about 100 feet above normal at Atchison.



Checking Into Urban Renewal

City officials are checking into urban renewal projects. The Harrison River, fed by an unusual quantity of rain, is about 100 feet above normal at Atchison.

Storm Damage

Damage to property from recent storms. The Harrison River, fed by an unusual quantity of rain, is about 100 feet above normal at Atchison.

Red Cross Asks Contributions

Red Cross requests contributions for disaster relief. The Harrison River, fed by an unusual quantity of rain, is about 100 feet above normal at Atchison.

Disaster Fund - \$21,581

Disaster fund total reaches \$21,581. The Harrison River, fed by an unusual quantity of rain, is about 100 feet above normal at Atchison.

Blazon Another Success For Nasser

Nasser's military successes in the Middle East. The Harrison River, fed by an unusual quantity of rain, is about 100 feet above normal at Atchison.

Storm Damage

Damage to property from recent storms. The Harrison River, fed by an unusual quantity of rain, is about 100 feet above normal at Atchison.

Disaster Fund - \$21,581

Disaster fund total reaches \$21,581. The Harrison River, fed by an unusual quantity of rain, is about 100 feet above normal at Atchison.

Blazon Another Success For Nasser

Nasser's military successes in the Middle East. The Harrison River, fed by an unusual quantity of rain, is about 100 feet above normal at Atchison.

More Marines Into Mideast No Rebel Opposition As U.S. Leathernecks Pour Into Lebanese Capital

WASHINGTON (AP) — The United States fleet sent more Marines into the Middle East today. Reports also indicated that British troops may soon land in Jordan, following U.S. landings in Lebanon.

Ready For Any Assignment

Marines are ready for any assignment in the Middle East. The Harrison River, fed by an unusual quantity of rain, is about 100 feet above normal at Atchison.

Blazon Another Success For Nasser

Nasser's military successes in the Middle East. The Harrison River, fed by an unusual quantity of rain, is about 100 feet above normal at Atchison.

BULLETINS

LONDON (AP) — The Soviet government today urged the United States to withdraw its troops from Lebanon.

WASHINGTON (AP) — The United States fleet sent more Marines into the Middle East today.

WASHINGTON (AP) — The United States fleet sent more Marines into the Middle East today.

WASHINGTON (AP) — The United States fleet sent more Marines into the Middle East today.

WASHINGTON (AP) — The United States fleet sent more Marines into the Middle East today.

WASHINGTON (AP) — The United States fleet sent more Marines into the Middle East today.

WASHINGTON (AP) — The United States fleet sent more Marines into the Middle East today.

WASHINGTON (AP) — The United States fleet sent more Marines into the Middle East today.

WASHINGTON (AP) — The United States fleet sent more Marines into the Middle East today.

WASHINGTON (AP) — The United States fleet sent more Marines into the Middle East today.

WASHINGTON (AP) — The United States fleet sent more Marines into the Middle East today.

WASHINGTON (AP) — The United States fleet sent more Marines into the Middle East today.

WASHINGTON (AP) — The United States fleet sent more Marines into the Middle East today.

WASHINGTON (AP) — The United States fleet sent more Marines into the Middle East today.

WASHINGTON (AP) — The United States fleet sent more Marines into the Middle East today.

WASHINGTON (AP) — The United States fleet sent more Marines into the Middle East today.

WASHINGTON (AP) — The United States fleet sent more Marines into the Middle East today.

WASHINGTON (AP) — The United States fleet sent more Marines into the Middle East today.

ATCHISON SUNDAY GLOBE

PRICE TEN CENTS ATCHISON, KANSAS, SUNDAY, JULY 20, 1958 20 PAGES EIGHTY FIRST YEAR 13055

What Has Become Of The Old Fashioned Boy Who Had To Do The Churning Along With Other Chores?

Khrushchev Bid For Mideast Conference

Iraq Gesture Raises Hopes

WASHINGTON (AP)—Cassidy today said the Egyptian government has agreed to meet with the United States for a conference on the Middle East.

IRAKI GESTURE

WASHINGTON (AP)—Cassidy today said the Egyptian government has agreed to meet with the United States for a conference on the Middle East.

WASHINGTON (AP)

WASHINGTON (AP)—Cassidy today said the Egyptian government has agreed to meet with the United States for a conference on the Middle East.



A cleanup crewing a street in Atchison, Kan., after a heavy rain. The crew is working to clear the street of debris and prepare it for traffic. The street is lined with buildings and trees, and the ground is wet and muddy.

Speed Cleanup At LFM; Urge Flood Prevention

The LFM Co. will begin cleanup work on the street in Atchison, Kan., after a heavy rain. The crew is working to clear the street of debris and prepare it for traffic.

The LFM Co. will begin cleanup work on the street in Atchison, Kan., after a heavy rain. The crew is working to clear the street of debris and prepare it for traffic.

The LFM Co. will begin cleanup work on the street in Atchison, Kan., after a heavy rain. The crew is working to clear the street of debris and prepare it for traffic.

Unsafe Buildings In Stricken Area Razed

Hubert A. Cox, Commissioner of the State Department of Public Safety, today announced that unsafe buildings in the stricken area of Atchison, Kan., will be razed.

NO AGREEMENT

City Attorney Earl Davis today said that no agreement has been reached between the city and the state regarding the razing of unsafe buildings.

Central Missouri Hit After Heavy Rains

KANSAS CITY (AP)—Torrential rains today hit central Missouri, causing flooding and damage to crops and property.

Seeks County Clerk Post

A. J. Hines today announced that he is seeking the position of county clerk in Atchison, Kan.

Disaster Fund—\$29,550

The Atchison Disaster Fund total reached \$29,550 today, according to the fund's report.

Captured Helicopter Crew Freed By East Reich

A captured helicopter crew was freed by the East German government today, according to reports.

Joyous Reunion

A joyous reunion took place today between family members of a missing soldier.

Let's Answer Some Questions About The Water Company

Atchison will vote on the proposed merger of the water companies today. Here are some questions and answers about the issue.

Chilling To Americans—New Look In Moscow Since Mideast Crisis

By HAROLD K. MENZ
MOSCOW (AP)—Moscow today is looking at the United States with a new eye, according to a Soviet official.

By HAROLD K. MENZ
MOSCOW (AP)—Moscow today is looking at the United States with a new eye, according to a Soviet official.

By HAROLD K. MENZ
MOSCOW (AP)—Moscow today is looking at the United States with a new eye, according to a Soviet official.

Area Weather

Area weather forecast for Sunday, July 20, 1958. Expecting clear skies with a high of 85 and a low of 65.

Let's Answer Some Questions About The Water Company

Atchison will vote on the proposed merger of the water companies today. Here are some questions and answers about the issue.

Area Weather

Area weather forecast for Sunday, July 20, 1958. Expecting clear skies with a high of 85 and a low of 65.

Let's Answer Some Questions About The Water Company

Atchison will vote on the proposed merger of the water companies today. Here are some questions and answers about the issue.

Let's Answer Some Questions About The Water Company

Atchison will vote on the proposed merger of the water companies today. Here are some questions and answers about the issue.

Into New Locations—

Because of damage to their buildings by the July 11 wind-storm, hail and water a number of Atchison retail stores and business firms have moved to temporary quarters.

These firms and their new locations:

B. F. Goodrich store, 816 Commercial.

Robertson's Drug store, basement of Diebolt's, 506 Commercial.

Wollers GE Appliance store, 313 Division.

Art's Radio & T-V shop, with Frederick's at 1017 Main.

People's Furniture store, at the Green Acres club, North Seventeenth.

J. C. Penney Co. store, 820 and 824 Commercial.

Walsh Clothing Co. store, stock

temporarily in storage at the former Buhlman Wood working plant, 20th and Main.

Hilligoss Shoe store, 802 04 Commercial (formerly the Central market location).

Tonsing's Book store, to be located soon on the northwest corner, Fifth and Commercial, present location of Nass Bros. grocery store. The Nass store is quitting business temporarily.

Commerce Investment Co. and the Commerce Savings & Loan association, 423 Commercial (the former location of the two firms).

Rose Stewart's Dress shop at the J-G Decorating store, 724 Commercial

Bill Horan's tavern, not located.

Shamrock cafe, not located.

Donright Supply Co., storm windows and doors, to the Jacobs building, Thirteenth and Main.

Brazeal-McDaniel Motor Co., selling new and used cars at garage adjacent to showrooms.

Alberts Sheetmetal Works, at the Emery Glass Service, 301 Commercial.

Teelers Home laundry, not located

Made O' Day, not located.

Sinderson, Henning & Mueller accounting office, to eventually be located in the former Drury insurance office, Professional building.

Atchison Trades and Labor Council, at 1301 Main.

GOP Meeting Here Friday

A meeting for all Republicans, both men and women, was announced today by Mrs. William Muchnic, president of the Women's Republican club, to be held at Thompson's restaurant Friday at 7:30 p.m.

A number of Republican candidates for state offices are expected to attend and make short talks and all local candidates are urged to be present.

Dessert and drinks will be served

ATCHISON DAILY GLOBE

PRICE FIVE CENTS ATCHISON, KANSAS, FRIDAY, AUGUST 1, 1958 12 PAGES EIGHTY FIRST YEAR 33059

One Of The City's More Rabid Sports Fans Demands More Attention Be Given The A's Disaster Instead Of Atchison's Familiar Scenes Again!



CHILDREN ON THE TRUCKS AT THE BARNYARD AT THE HOME OF THE ATCHISON CITY WATERWORKS. THE CHILD IN THE CENTER IS A DAUGHTER OF THE ATCHISON CITY WATERWORKS. SHE WAS TAKEN TO THE BARNYARD BY HER FATHER, THE ATCHISON CITY WATERWORKS. SHE WAS TAKEN TO THE BARNYARD BY HER FATHER, THE ATCHISON CITY WATERWORKS.

"Operation Cleanup" Under Way Here Again

What Kansas Editors Say On City Water Plants

Atchison votes Tuesday on acquisition of the City Waterworks.

At the request of a local taxpayer, The Globe contacted editors of Kansas towns where there are municipal water plants.

Here are statements from two more editors controlling how they feel about it.

Gene Lovell, editorial page editor of the Emporia Gazette:

"I am in municipally-owned water plants from our experience in Emporia."

"And Emporia has owned its own plant for the last thirty years."

"We get upland service and good water at the rate of about \$2.25 average household monthly bill. The water department has built up reserves that have been in mightily handy when needed for other city contingencies and purposes."

"Also, our municipal plant allowed it could meet an emergency in 1954 during the drought. Emporia's plant has never been dry and it was necessary to tap a new supply from the Cottonwood river. The city just the emergency and in the last two years has provided that a crisis will not be repeated in the future."

"It is doubtful if a private enterprise would have been capable or ready to meet the expenses of this emergency in the manner Emporia's municipally-owned plant does."

"I endorse Atchison's move to acquire the water works and am sure the future years will prove it is most satisfactory purchase."

Martin Thomas, managing editor of the Parnassus:

"Most any Parnassus resident will tell you he is happy."

Aquacade At 7:30 Tonight

Atchison's 10th Annual Aquacade will be held at 7:30 o'clock tonight at the corner of 10th and Washington streets. The Aquacade will be held tomorrow night, according to Clarence Shivers, Aquacade director.

"The Aquacade is a very popular event and we expect a large attendance," Shivers said.

Miss Gene Leary and Miss Elizabeth Johnson will be the featured attractions in the parade.

BULLETIN

A call from the office of George Mackay, Atchison City Manager, was received by City Manager Bill Walker and City Manager Bill Walker and City Manager Bill Walker.

The bulletin stated that the city is planning to acquire the water works and is currently in the process of negotiating with the state for the purchase of the water works.

The bulletin also stated that the city is planning to acquire the water works and is currently in the process of negotiating with the state for the purchase of the water works.

Four Points—

The group here calls for quick flood control.

A group of 25 citizens, comprising businessmen, farmers and homeowners, met at the city hall last night to discuss the need for flood control in Atchison.

The group called for four main points:

1. The construction of a levee along the Missouri river.
2. The construction of a levee along the Neosho river.
3. The construction of a levee along the Neosho river.
4. The construction of a levee along the Neosho river.

Group Here Calls For Quick Flood Control

The group here calls for quick flood control.

A group of 25 citizens, comprising businessmen, farmers and homeowners, met at the city hall last night to discuss the need for flood control in Atchison.

The group called for four main points:

1. The construction of a levee along the Missouri river.
2. The construction of a levee along the Neosho river.
3. The construction of a levee along the Neosho river.
4. The construction of a levee along the Neosho river.

Vacate Order

Vacate order for the building.

The city council has vacated the order for the building.

The city council has vacated the order for the building.



TRUCK AND TWO CRANE AT THE BARNYARD AT THE HOME OF THE ATCHISON CITY WATERWORKS. THE TRUCK IS A TRUCK AND TWO CRANE AT THE BARNYARD AT THE HOME OF THE ATCHISON CITY WATERWORKS.

Flood Rout 20 Easton Families—

About 20 families were out of their homes.

The flood has caused about 20 families to be displaced from their homes in Easton.

The flood has caused about 20 families to be displaced from their homes in Easton.

DIARY OF A TRIP TO RUSSIA

My first trip to Russia was in 1920. I was a young man then, full of idealism and hope. I had heard of the Russian Revolution and the promise of a new world. I was determined to see it for myself.

I traveled through the vast, open spaces of Russia, from the frozen north to the sun-drenched south. I saw the people in their traditional dress, the grand palaces of the tsars, and the poverty of the masses.

I was struck by the contrast between the rich and the poor. The aristocracy lived in opulence, while the workers and peasants struggled for survival. I saw the power of the state and the role of the military.

I traveled through the vast, open spaces of Russia, from the frozen north to the sun-drenched south. I saw the people in their traditional dress, the grand palaces of the tsars, and the poverty of the masses.

I was struck by the contrast between the rich and the poor. The aristocracy lived in opulence, while the workers and peasants struggled for survival. I saw the power of the state and the role of the military.

Weather Forecast

Partly cloudy with showers through tomorrow. Warm.

Kansas—Mostly cloudy with showers through tomorrow. Low to high 65 to 80. High temperature, low 55 to 60. Wind, light to moderate. Direction, variable.

Missouri—Mostly cloudy with showers through tomorrow. Low to high 65 to 80. High temperature, low 55 to 60. Wind, light to moderate. Direction, variable.

Near Record Rainfall Here

1957 rainfall at Atchison exceeds the 1947 record.

The rainfall at Atchison for 1957 has exceeded the record set in 1947. The total rainfall for 1957 is now 47.5 inches, compared to 47.0 inches in 1947.

Weather Forecaster

Atchison, Mo., 61°; Kansas City, Mo., 60°; St. Louis, Mo., 58°; Chicago, Ill., 55°; New York, N.Y., 50°; Washington, D.C., 52°; Philadelphia, Pa., 51°; Baltimore, Md., 50°; Pittsburgh, Pa., 48°; Cleveland, Ohio, 49°; Detroit, Mich., 47°; St. Paul, Minn., 46°; Minneapolis, Minn., 45°; Denver, Colo., 44°; Salt Lake City, Utah, 43°; Portland, Ore., 42°; San Francisco, Calif., 41°; Los Angeles, Calif., 40°; Honolulu, Hawaii, 38°.

Killed When Speeding Car Spins On Curve

Wichita, Kan. — A 30-year-old man was killed when his car spun out of control on a curve on a highway near Wichita.

The victim was driving a 1957 Chevrolet when he lost control of the car while speeding around a curve. The car rolled over and caught fire.

Disaster Fund—\$48,628.25

Atchison's Disaster Fund, started after the July 11 wind and flood storm, today totals \$48,628.25, according to Dan Clegg, treasurer of the Disaster Fund committee.

The Following are contributors:

- Mr. and Mrs. Guy Egan, \$25.
- Trinity Episcopal church, \$50.
- Ordinance Corp., Atchison, Kan., \$11.
- First Methodist church, \$28.
- Hawes Plumbing Co., \$100.
- Kansas club, \$100.
- Mr. and Mrs. Arthur Moorhead, \$300.
- A. P. Bishop, \$5.
- Miss Pinda Mann, \$10.
- Miss D. Lyman, \$10.
- Delta Alpha Club, St. Mark's, \$30.
- Miss Bonnell's mail, \$7.50.
- Tactile Mangoldorf, \$5.
- W. V. Johnson, \$5.
- Anonymous, \$10.

Beauty Galore At Atchison's Aquacade—



THEIR CANDIDATES for queen of the Aquacade, shown above, are competing in the beauty pageant parade. From left to right: Miss Helen Baker, Miss Mary Ann Baker, Miss Helen Baker, Miss Mary Ann Baker, Miss Helen Baker, Miss Mary Ann Baker.



THEIR CANDIDATES for queen of the Aquacade, shown above, are competing in the beauty pageant parade. From left to right: Miss Helen Baker, Miss Mary Ann Baker, Miss Helen Baker, Miss Mary Ann Baker, Miss Helen Baker, Miss Mary Ann Baker.

ATCHISON SUNDAY GLOBE

PRICE TEN CENTS ATCHISON, KANSAS, SUNDAY, AUGUST 3, 1958 24 PAGES EIGHTY-NINTH YEAR 23060

We Know August Is The Dog Days Because The Kids Are Already Growing About School Opening In September

Election On Tuesday—

Three Special Issues Face Atchison Voters

A lot has already happened in the election campaign here. The voters will have to decide on three special issues: the school bond issue, the city water plant issue, and the city manager issue.

Area Weather

Mostly fair and cool with a high in the 70's. A few showers are possible.

To The People Of Atchison

As a citizen of this city, I feel that it is our duty to participate in the election process. We must choose our representatives wisely.

Eisenhower Check On Disaster Loss Here

President Dwight D. Eisenhower has authorized a check on disaster losses in Atchison. The city has suffered significant damage from recent flooding.

Kansas Primary

See Light Vote As Mild Campaign Ends

The Kansas primary election was held today. The turnout was lower than expected, indicating a mild campaign. Several candidates are vying for the Democratic nomination.

Disaster Fund—\$49,307.25

Atchison's Disaster Fund yesterday received a total of \$49,307.25. This amount will be used to assist victims of the recent flooding in the city.

Like Readies Midst Plan

Aquacade Queen—

Effingham Beauty Wins Crown Here

Effingham Beauty won the title of Aquacade Queen. She was crowned during the parade. The ceremony was held in front of a large crowd.

Back To School

Students are returning to school. Parents are busy preparing for the new year. Schools are starting to receive supplies.

DIARY OF A TRIP TO RUSSIA

Back we went from there to Moscow from where we walked over to the Red Square where they were holding a parade. The atmosphere was very festive.

What Kansas Editors Say On City Water Plants

Atchison voters Tuesday on whether or not it was to take over the Atchison City Waterworks. The issue is controversial among editors and the public.

Back To School

Students are returning to school. Parents are busy preparing for the new year. Schools are starting to receive supplies.

Back To School

Students are returning to school. Parents are busy preparing for the new year. Schools are starting to receive supplies.

48 ATCHISON GLOBE Sunday, May 9, 1965

Flood Protection Vital To Downtown Rebuilding

The story of Atchison's re-birth and because of its recovery from the July 1968 disaster is also the focal point of a study and an analysis of flood damage from the overflow of White Clay and 15 and four state highways. The study is being prepared by the Missouri Urban Renewal program and is being prepared by the Missouri Urban Renewal program and is being prepared by the Missouri Urban Renewal program.

It was a confusing period after July 11, 1968, when the first disaster hit the city, even though city officials and civic leaders went into action quickly to get the city back on its feet. Plans were being made for a program of some type when the second disaster hit on July 20.

One of the aspects of the program for rebuilding the city was a flood control plan that would protect the city from future disasters as a result of the overflow on White Clay creek. This resulted in the White Clay River, Whiskey Creek and Waterhole Creek.

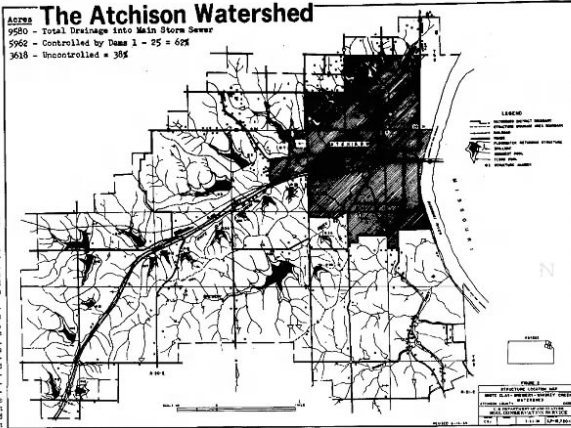
A comprehensive history of the Atchison Watershed and the work involved in preliminary planning to obtain federal assistance has been completed. Gen. A.D. Warlock, the city officer, in the report, Central Warlock, a former president of the watershed and city's first mayor, was designated to carry out a description of the area and pertinent facts leading up to the floods.

Tripartite streams overflowed, flooding residential areas in several parts of the city. Three homes were destroyed and at least 95 others experienced some damage. Each of the railroads suffered damage and stock and goods in transit. On July 11, 1968, a heavy rain caused a minor flood which did not cause any damage. On July 20, 1968, a four inch rain flooded 25 blocks of the business and industrial area to a depth of up to four feet. Some of the flooding areas were flooded for three days, and many residences and business premises suffered their second severe flood within three weeks.

For many of the flooded properties, the additional damage was relatively small because, after the July 11 disaster, the additional damage could be done. However, a number of business places had been partially rehabilitated by July 11, and those who suffered severe destruction of goods and supplies. Although the damage from the July 20 flood was not as severe as that from the July 11 flood, the damage from the July 20 flood was not as severe as that from the July 11 flood.

On July 14, 1968, three days after the first flood, citizens requested capacity of the city and to be repaired. On July 14, 1968, the Small Business Administration announced a disaster area.

Atchison had the traditional flood control concept of river towns — channels and levees large enough to contain the flood waters. This was the engineering philosophy of the city engineer, George W. Jones, who was in charge of the city's flood protection. On Aug. 1, 1968, the commission adopted a resolution which directed the city engineer to report on the feasibility and practicability of flood control projects in Atchison with particular reference to White Clay creek.



The methods employed were: (1) available under PL 566, the Water Pollution Control Act, the A.D. Warlock, a retired army general, chairman of the Flood Prevention Act. This act provides for the construction of flood control projects in areas where the overflow of the White Clay creek is a problem. The act provides for the construction of flood control projects in areas where the overflow of the White Clay creek is a problem.

Atchison had the traditional flood control concept of river towns — channels and levees large enough to contain the flood waters. This was the engineering philosophy of the city engineer, George W. Jones, who was in charge of the city's flood protection. On Aug. 1, 1968, the commission adopted a resolution which directed the city engineer to report on the feasibility and practicability of flood control projects in Atchison with particular reference to White Clay creek.

ATCHISON A City Rebuilt

Congratulations On A Job Well Done

- WALL TO WALL CARPET
- LARGE UNITS
- TV & RADIOS
- AIR CONDITIONED

Over 20 Units

Call EM 7-9814

ONE OF ATCHISON'S NEWEST MOTELS

Look for the Bright Orange Building on 1342 SKYWAY

We feature the **BURGER FAMILY** and **A & W ROOT BEER**

11 A.M. TO 11 P.M. MONDAY thru THURSDAY
11 A.M. TO 12 P.M. FRIDAY thru SUNDAY

QUARTS HALF GALLONS GALLONS

YOUR A & W DRIVE-IN IS BIGGER AND BETTER THIS YEAR. WE HAVE ENLARGED OUR KITCHEN SO WE CAN SERVE YOU FASTER AND COMPLETELY PAVED OUR PARKING LOT FOR YOUR CONVENIENCE.

Come On Out During Atchison's Big CELEBRATION & DEDICATION MALL MAY 13-14-15-16 ATCHISON, KANSAS

FOR TAKE HOME SERVICE, PHONE ORDERS AHEAD. PICK THEM UP IN 15 MINUTES—READY WHEN YOU ARRIVE. Phone EM 7-5450

EDITORIAL PAGE

Tenth Anniversary Of City's Tragic Disaster

Nature went on a binge in Atchison ten years ago tomorrow morning.

Atchison residents awakened the morning of July 11, 1958, to find their downtown and industrial areas east of Seventh street a shambles. Residential areas in both north and south Atchison were also victims of the storm and deluge that struck the community a few hours before dawn of that fateful day.

Flooding White Clay creek, swelled out of its banks by torrential rains in both north and south Atchison as well as at Seventh and Main streets, caused most of the havoc. It was considered a miracle only three persons perished.

Hectic years of rebuilding the downtown area resulted in the city earning the title of "The Miracle City" through its rise from the devastation of that morning to completion of its mall and much new construction. The mall was completed in 1964 and the city appropriately staged a Mall Celebration in 1965, marking the end of the UR program.

Along with the Urban Renewal planning after the disaster came the Atchison Watershed. It developed the construction of 25 reservoirs circling the community along the drainage areas that form White Clay and Brewery creeks as well as other smaller streams. These dams are now serving a double purpose -- flood protection and recreation, such as the center created at Warnock Lake (Dam No. 23), "largest of the watershed reservoirs.

And as the ten years have passed, all of the scars have not been removed. There have been many relocations of business and industry in the community due to the July 11 flood as well as one that followed on July 30. Some were due to the UR program, some to the fact the business was swept away in the disasters.

Final stage of flood protection so vital to the industrial area east of Seventh street is now under way in the construction of the cut-and-cover conduit from the Missouri river west to Seventh street. This is to give the community the 100 per cent flood protection (if that is possible) the U.S. Corps of Army Engineers prescribed.

The Atchison Watershed dams, according to the engineers, gave the city a good 90 per cent protection from another "100 Year Flood" of which Atchison experienced two in 1958 in less than three weeks.

The area on Main street east of Fifth street is now experiencing similar travail, as the cut-and-cover construction has torn up streets, rerouted traffic, etc., as experienced for nearly six years in the devastated area on Commercial street.

And there is more to come in other parts of the community with new U.S. 73 entrances to be constructed from the south and west. And the city is presently making a survey on two proposed new Urban Renewal projects in connection with the U.S. 73 projects. The survey is to determine whether or not the UR projects -- the Southside and Woodlawn avenue -- are feasible.

The 73 projects will cause more dislocations. And the UR projects, if found feasible by the city fathers, more of the same. Credits remaining from the Downtown Urban Renewal project completed in 1965 along with credits for the U.S. 73 projects are supposed to carry the brunt of the expense of the new UR projects.

Total destruction and damage in the 1958 floods was estimated at \$2 1/2 million.

In the reconstruction of the downtown area, not including the cost to private enterprise, and in the watershed program, net cost to the city at the close of the UR program in 1965 was estimated at approximately \$1,000,000. The projects cost

the federal government \$4,800,000, which does not include an expenditure of nearly \$4 million (all federal) for the cut-and-cover conduit now being built.

Ten years and \$10 million have not yet entirely cured the hangover of nature's binge July 11, 1958.

Washington Merry Go Round

By Drew Pearson

Washington -- The natural gas industry's victory for a lax gas pipeline safety bill, in the House of Representatives last week, illustrates not only the effectiveness of astute lobbyists but also a problem facing the White House.

Lyndon Johnson has done more for public protection than any President in history -- except from auto safety to truth-in-lending to consumer protection. He is heartily for a strong gas pipeline safety bill to protect the public from the increasing number of explosions occurring in the huge 700,000-mile network of pipes, some of them aging, which crisscross the nation.

However, lurking in the maze of our federal bureaucracy is one potent bureaucrat who is not so concerned. And one reason for the lobbyists' victory on pipeline safety was the foot-dragging of John Sweeney, assistant secretary of transportation.

At a time when the White House needed to make a drive to defeat lobbyists' pressure on Capitol Hill, Sweeney was taking a cram bar review course to be admitted to the D.C. bar. Furthermore, his chief assistant, Donald Radler, was on vacation when he should have been working on Capitol Hill.

Finally, Sweeney had been holding press conferences stating that the weak House version of the pipeline bill was satisfactory, and the very same time Sweeney's chief, Secretary of Transportation Alan Boyd, was presenting the bill as a "dangerous deception."

Earlier, Sweeney's private affection for the pipeline industry angered the relatively calm Joseph Califano in the White House. Califano berated him over the telephone. However, last week Sweeney apparently had forgotten Califano's bawling out.

The assistant secretary of transportation was appointed to his job from an excellent background. He did well as assistant to the late Sen. Pat McNamara of Michigan, Democrat, a crusader for the public. Sweeney also did well with the Appalachian Regional Commission. But recently he has nursed a private ambition to become governor of Michigan, though with Michigan now leaning Republican he may set up a law practice in Washington instead.

ONE BUREAUCRAT'S RECORD

At any rate, Sweeney has consistently undercut his boss, Secretary Boyd, to say nothing of his chief in the White House. Here is part of his record:

--Sweeney argued that Secretary Boyd should not undertake a two-year study of the auto insurance industry, which has killed rates on so many motor-

ists and canceled out others. Boyd overruled him and went ahead.

On the other hand, Sweeney succeeded in persuading Secretary Boyd to go easy on the auto industry in disclosing cost of safety features required under new auto safety legislation.

-- Sweeney telephoned the staff of the Democratic study group in the House of Representatives, stating that the Transportation Department was backing the highway authorization bill which provides for super highways in the District of Columbia. This is the bill favored by the highway lobbyists but vigorously opposed by Secretary Boyd.

-- Sweeney has refused to push his supporters into setting up the first off pipeline safety standards, long overdue.

-- Sweeney is against the Transportation Department's plan to build a prototype safety automobile equipped with an anti-pollution muffler to kill exhaust fumes, even though the law requires the Transportation Department to build such a safety car.

Sweeney told a group of state officials not to worry about the federal government imposing a 10 per cent penalty by withholding highway funds if the states didn't carry out their obligation to set up highway safety programs. Congress has passed a law requiring states to meet federal safety standards if they want to continue to get full federal funds. Sweeney belittled this requirement. His boss, Secretary Boyd, was anything but pleased. However, the damage was already done.

Sweeney is a charming, intelligent individual, which makes him all the more effective. He is one bureaucrat whose ambition to become a lawyer or enter Michigan politics should be furthered by President Johnson.

CAPITAL NEWS CAPSULES

Race riots -- To keep racial violence from exploding again this summer, Vice President Humphrey has urged privately that the National Guard be called to active duty to segment the police in troubled cities. He believes guardsmen should be given special police and riot training. Humphrey was impressed with the effectiveness of police and guardsmen suppressing trouble in Washington following the shutdown of Housatonic City. Riots can be avoided, he believes, if the authorities move fast enough.

Unwise economy -- The Joint Chiefs of Staff have complained to Secretary of Defense Clark Clifford that cutbacks by Congress have already caused serious military shortages around the world. In Europe and Korea, none of the armed services have enough spare parts to keep all their equipment operating. The Navy has complained that ship repairs have fallen dangerously behind schedules. The Air Force doesn't have enough skilled manpower to operate its modern equipment. The new budget cuts demanded by Congress, the joint chiefs warn, could jeopardize our military preparedness.

Finish Cut-And-Cover Project By End Of Year

"We hope to have the waters of the White Clay creek flowing through our conduit by the middle of November," said Jerry Ashbach, Ashbach Construction Co., St. Paul, Minn., contractor on the U.S. Army Corps of Engineers cut-and-cover flood protection project. It has now reached the Missouri Pacific railroad bridge near Seventh and Main streets.

Ashbach said the entire project could be completed before the end of the year barring any unforeseen delays.

He said the base structure for the conduit beneath the railroad bridge could be completed within two weeks and then work would begin on the last three 30-foot sections of the conduit and the approach structures. Ashbach expects this work to be completed by the latter half of November or early in December.

"After that, work will begin on sewer connections at Fourth and Main streets which is the final phase of the project," he said. "Every effort will be made to open Fourth street to a larger volume of traffic as soon

as possible."

Retail merchants in the vicinity of Fourth and Main streets succeeded in opening the intersection earlier this summer after appealing to the city manager and Ashbach. Presently, vehicular traffic has to yield right-of-way to Ashbach equipment working in that area on the temporary road which runs just west of the actual intersection.

Ashbach said relocation of a sanitary sewer line south of the railroad tracks and west of where the White Clay creek will enter the conduit has been completed and workmen are now making storm sewer connections to the conduit which runs to the Missouri river.

Ashbach began work on the 2,340-foot long conduit on July 19, 1967, after it was awarded the construction contract by the Corps for its bid of \$3,184,000.

Under the terms of the Corps' construction contract, Ashbach faces a \$390 penalty for each calendar day beyond the project's completion date. Steve

(Continued on page 8)



THE CUT-AND-COVER FLOOD PROTECTION conduit construction has reached the Missouri Pacific railroad bridge near Seventh and Main streets, Jerry Ashbach, Ashbach Construction Co., contractor on the U.S. Army Corps of Engineers project, said the entire project could be completed by the latter part of December.—Globe photo.

Finish

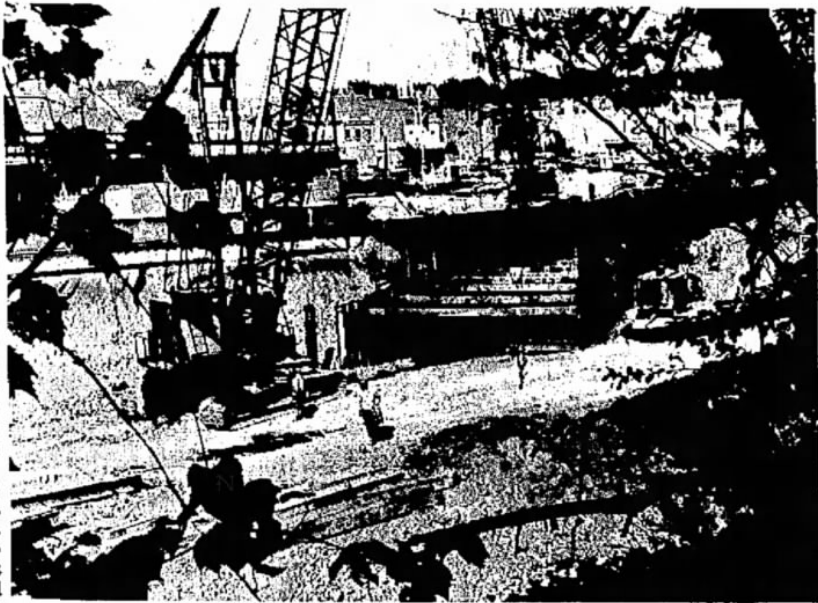
(Continued from page 1)

James, project engineer for the Corps, said the original completion date had been set for April 25 of this year, but Ashbach has been granted time extensions and several more are still pending in the Corps' district office at Kansas City.

The contractor said weather has been a factor in the delay of the project's completion. Ashbach said a day of rain may impede construction progress for two days while workers pump the water from the 30 by 40 foot excavation for the conduit. He added that concrete for the conduit cannot be poured when the weather is too hot.

James said the conduit is only part of the Corps' overall flood protection plan for Atchison. The watershed dams surrounding the city were the first part of the Corps' plan. James said the conduit should give the east end of the city the long range protection it needs from high waters on White Clay creek which nearly destroyed the downtown area in two floods of 1958.

Ashbach Construction offices are presently located on the ground floor of the Hotel Atchison which is expected to be razed later this month or early in November for construction of the Housing Authority high rise apartment building for the elderly. The contractor plans to move his offices to the former Union Depot building at Third and Main streets after he vacates the Hotel Atchison building on Oct. 31.



STEEL PILING OF THE CUT-AND-COVER project can be seen extending past the Missouri Pacific railroad bridge near Seventh and Main streets. The view is from Skyway highway. Jerry Ashbach, contractor on the U.S. Army Corps of Engineers flood protection project, expects to have the project completed before the first of the year.

